

METALLISED POLYESTER FILM CAPACITORS

Socket type

MAIN APPLICATION: Mainly used in switch type fan regulators

CONSTRUCTION (DIP TYPE): Low inductive cell of metallised polyester film coated with flame retardant grade epoxy powder

CLIMATIC CATEGORY: 40/85/21

CAPACITANCE VALUE, RATED VOLTAGE (DC): Refer dimension chart

CAPACITANCE TOLERANCE: $\pm 5\%$, $\pm 10\%$

VOLTAGE PROOF: $1.6 \times U_r$ for 2 seconds between the terminals

TAN δ (DISSIPATION FACTOR): 0.8% (max) at 1 kHz

INSULATION RESISTANCE

Minimum insulation resistance R_{is} measured at 100 V DC for 1 minute.

Or, time constant $T = C_r \times R_{is} > 2500$ s at 25° C, relative humidity $\leq 70\%$

LIFE TEST CONDITIONS

a) Endurance Test: Loaded at 1.1 times of rated voltage at 70° C for 500 hours.

After the test:

$\Delta c/c:$ $\leq 5\%$ of initial value

Change in Tan $\delta:$ ≤ 0.004 of initial value

Insulation resistance: $\geq 50\%$ of the value specified in data sheet

b) Switching test: $> 20,000$ cycles of 4 step / 5 step switch type fan regulator

Input supply: 240 VAC Load: Fan Motor

After the test:

$\Delta c/c:$ $\leq 5\%$ of initial value

Change in Tan $\delta:$ ≤ 0.004 of initial value

Insulation resistance: $\geq 50\%$ of the value specified in data sheet

c) Lot to lot testing: Loaded at 450 V AC at ambient temperature for 2 hours

After the test:

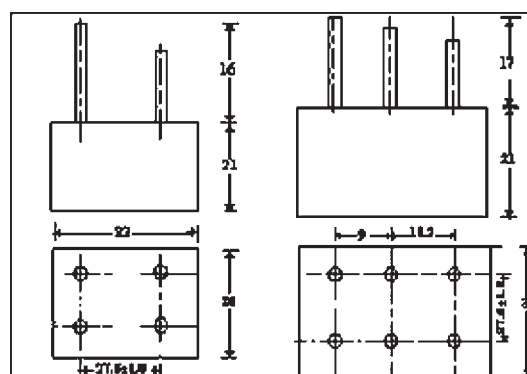
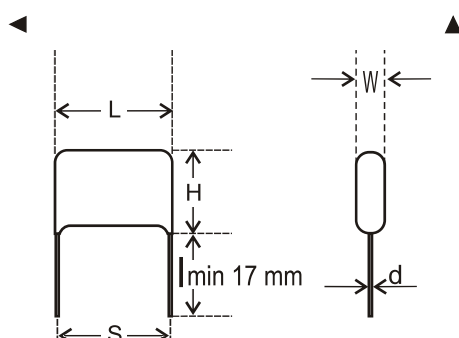
$\Delta c/c:$ $\leq 10\%$ of initial value

Change in Tan $\delta:$ ≤ 0.004 of initial value

Ordering codes and packaging units

Rated Voltage	Rated cap. (μ fd)	Maximum Dimensions (mm)					Ordering code	Packing units Bulk
		W ± 0.5	H ± 0.5	L ± 0.5	d ± 0.5	S ± 0.5		
250 V AC	1.0	6.2	16.0	31.0	0.8	27.5	02 105 +02*^	250
MPET	1.2	8.0	18.0	31.0	0.8	27.5	02 125 +02*^	250
Series	1.5	10.0	18.0	31.0	0.8	27.5	02 155 +02*^	250
	2.2	10.3	19.6	31.0	0.8	27.5	02 225 +02*^	250
	2.4	11.3	20.8	31.0	0.8	27.5	02 245 +02*^	250
	2.7	11.8	21.5	31.0	0.8	27.5	02 275 +02*^	250
	3.3	13.7	21.2	31.0	0.8	27.5	02 335 +02*^	250
	3.5	13.8	22.7	31.0	0.8	27.5	02 355 +02*^	250

EPOXY COATED TYPE:



CAPACITOR PACK

2 Capacitor pack (MPP): Capacitance Value: 2.2, 3.1 μ F
 Rated Voltage: 220 V AC, Tolerance: $+10\%$

3 Capacitor pack (MPP): Capacitance Value: 1.0, 2.2, 3.1 μ F
 Rated Voltage: 220 V AC, Tolerance: $+10\%$